

## Architectural Specifications

### PRODUCT

**TAVINEL C27 / 16 is a acoustic panel using a rectangular and unique angled perforated design**, giving a very uniform appearance when used as wall or ceiling treatment.

The Tavinel panels are made up of an **MDF core** sandwiched between a **surface layer** of real wood veneer, melamine or paint and an **acoustic**

### DIMENSIONS

**Perforation Face:** 27 mm squares , 16mm apart

**Open area:** 34.2 % perforated face

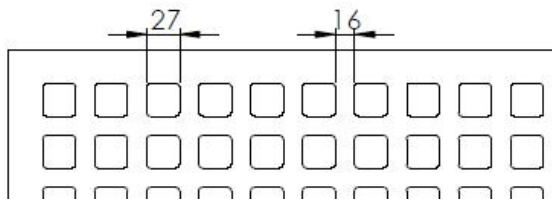
**Thickness:** 12mm

**Weight:** 9,5 kg / m<sup>2</sup>

**Standard sizes:**

Planks - 600 x 600, 1200 x 600mm ( Standard )

Panels - Other sizes available upon request



### MATERIAL SOURCE

All material used in the production of **WoodcomGSV** panels are from **European sources** . All manufacturing is done in the factory in Spain to the highest quality norms.

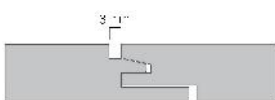
Our wood product components are sourced from providers with environmentally friendly practices and were required or request we supply certified materials; **PEFC and FSC Mdf & Veneers.**

### EDGE DETAIL

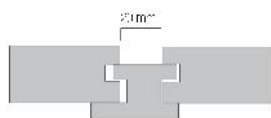
The **TAVINEL** range of panels can be machined to various edge profiles;

A range of edge profiles are available to suit the designers / architects' preferred look and installation method.

**TG 03** - Tongue & G with 3mm Gap



**RV 20** - Reveal, 20mm Shadow Gap



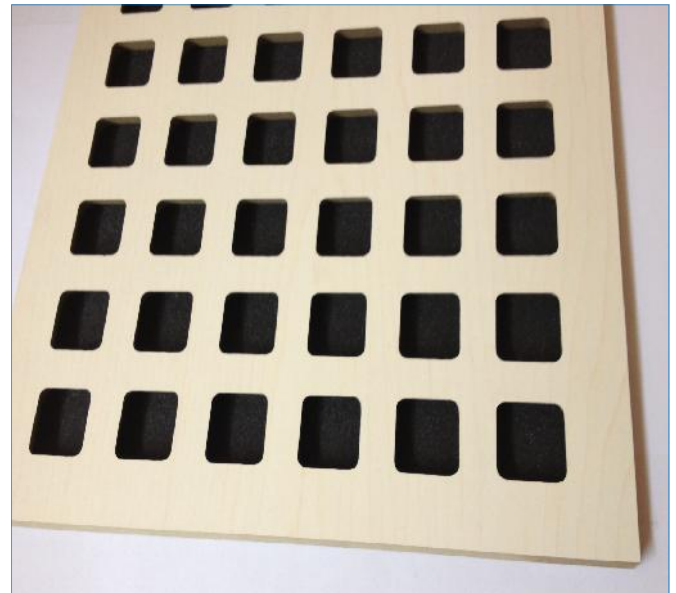
**TGV 02** - Tongue & Groove V Joint



**TBV 03** - Bevelled Joint 3mm Gap



**BIRCH FINISH - MELAMINE**



### FINISHES

The **TAVINEL** acoustic panels are available in a varying range of surface finishes from real wood veneers, melamine and HPL to high quality painted surfaces.

**Real Wood Veneers**

- All wood species - First quality

**Man made veneers**

- Reconstituted veneers - Good colour match

**Melamine**

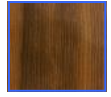
- Wood grain, Solid colours - Budget

**Laminates ( HPL )**

- Wood grain , Solid colours - High wear

**Paint**

- Matt, Semi-Matt & Gloss - Design



### APPLICATIONS

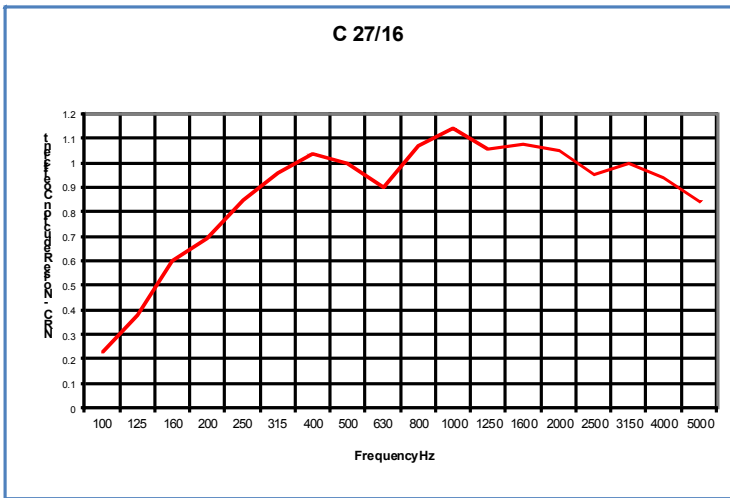
The **TAVINEL C27/16** panel is designed for use in **areas requiring a high level of sound absorption** as acoustic treatment.

Conference Centres  
Airports Universities  
Multi purpose halls

Auditoria Banquet Halls  
Hotels Restaurants  
Theatres Leisure Centres

**Acoustic Performance**

**Absorption rating - HIGH**



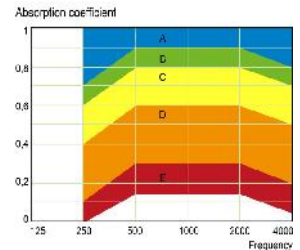
125	250	500	1000	2000	4000	NRC
0.38	0.85	1.0	1.14	1.05	0.94	<b>1.0</b>

**NRC Value: 1.0**  
**Absorption: Class A**

**ACOUSTIC ABSORPTION**

The unique design and perforation type, size and quantity make the TAVINEL C27/16 a absorbent panel often difficult to achieve in wood panels.

**Very good absorber for mid to high frequency ranges.**



**Acoustic Panel Specifications;**

Panels are tested in a laboratory using 40mm of acoustic insulation, 30kg/m3 and with an air gap of 250mm.

Area Grooved Face : 34.2%%  
 Area Perforated Back : 54.5%

**Technical Specifications**

**INSTALLATION**

The TAVINEL panels are designed to be Installed using the Woodcom GSV edge profiles or half perforation system.

Products are to be installed to manufacturers recommendations by experienced installers.

Material should rest for 2 to 3 days prior in the site conditions before carrying out the installation work. In new buildings with fresh concrete and plaster, installation should not be carried out until the relative humidity has equalised.

An expansion joint of 2-3mm should be allowed for every 7 meters.

When the finish is veneer - a natural product with inherent variations, panels should be selected for colour and grain matching prior to installation.

**TECHNICAL ADVICE**

Our qualified installation and acoustic engineers are available to assist with technical advice on specifications and installation requirements at [info@woodcomgsv.com](mailto:info@woodcomgsv.com).

**HANDLING AND STORAGE**

TAVILINE acoustic panels should be stored in a dry environment, flat and covered to protect them from dust and dirt. Package should be opened and panels allowed to acclimatize prior to installation.

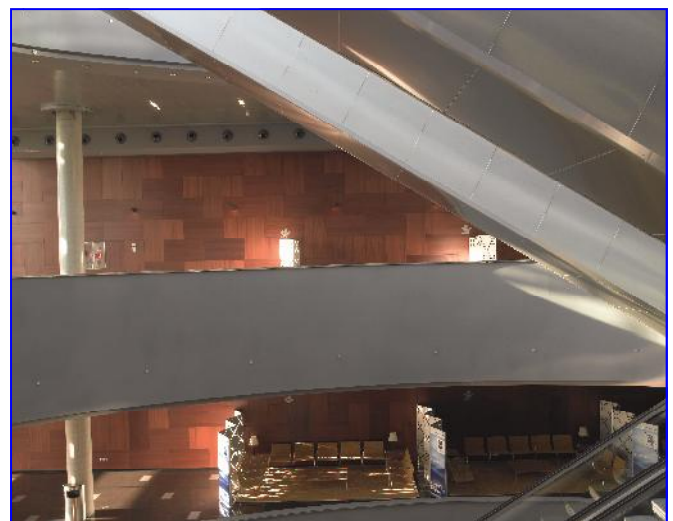
As these are **finished products** care should be taken in handling to prevent scratching and breakage.

**FIRE PERFORMANCE - HIGH**

The core material used in Fire Rated panels is **Euroclass Bs2d0** Mdf . When veneer is the finish we also use a fire retardant lacquer, Euroclass Bs2d0.

**IMPACT RESISTANCE - HIGH**

Medium density fibreboard panels used in our acoustic products are impact resistant and ideally **suited for use in high traffic areas** such as corridors and lecture theatres in schools, universities and public spaces.



**INTERNATIONAL SALES DIVISION**

Unit 23, Parkroe Estate  
 Ardnacrusha, Co. Clare  
 IRELAND  
 + 353 61 345155  
[info@WoodcomGsv.com](mailto:info@WoodcomGsv.com)

**HEAD OFFICE & MANUFACTURING DIVISION**

Ctra. Calig, km 3,5  
 Apdo.66  
 12580 Benicarlo ( Castellon)  
 SPAIN